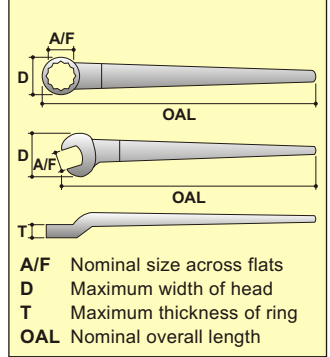


# STRUCTURAL WRENCHES

(OFFSET RING TYPE)



## METRIC BIHEXAGON



A / F mm	MODEL NO.	T mm	D mm	OAL mm	Wt. kg.
24	MOTW24	25	52	430	1.200
27	MOTW27	25	52	430	1.200
30	MOTW30	25	52	430	1.200
32	MOTW32	25	52	430	1.200
34	MOTW34	30	68	530	1.400
36	MOTW36	30	68	530	1.400
38	MOTW38	30	68	530	1.400
41	MOTW41	30	68	530	1.400
46	MOTW46	38	82	650	2.700
50	MOTW50	38	82	650	2.700
55	MOTW55	38	82	650	2.700
60	MOTW60	41	94	710	2.950

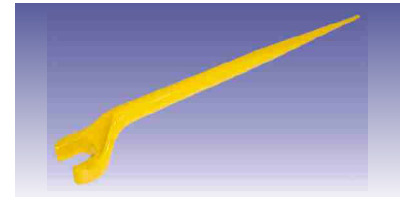
## FRACTIONAL BIHEXAGON



A / F inch	MODEL NO.	T inch	D inch	OAL inch	Wt. lbs.
15/16	AOTW15	0.984	2.047	16.929	2.640
1.1/16	AOTW17	0.984	2.047	16.929	2.640
1.1/8	AOTW18	0.984	2.047	16.929	2.640
1.1/4	AOTW20	0.984	2.047	16.929	2.640
1.5/16	AOTW21	0.984	2.047	16.929	2.640
1.3/8	AOTW22	1.102	2.677	16.929	3.080
1.7/16	AOTW23	1.102	2.677	20.866	3.080
1.1/2	AOTW24	1.181	2.677	20.866	3.080
1.5/8	AOTW26	1.496	3.228	25.590	3.080
1.11/16	AOTW27	1.496	3.228	25.590	5.940
1.13/16	AOTW29	1.496	3.228	25.590	5.940
1.7/8	AOTW30	1.220	2.952	22.834	5.940
2	AOTW32	1.377	3.149	24.606	5.940
2.1/16	AOTW33	1.377	3.149	24.606	5.940
2.3/16	AOTW35	1.377	3.464	25.984	5.940
2.1/4	AOTW36	1.377	3.464	25.984	5.940
2.3/8	AOTW38	1.614	3.700	27.952	6.380
2.7/16	AOTW39	1.614	3.700	27.952	6.380

# STRUCTURAL WRENCHES

(OFFSET OPEN JAW TYPE)

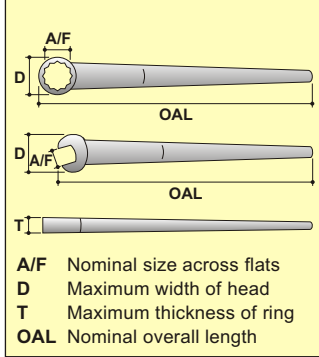


## METRIC SIZES

A / F mm	MODEL NO.	T mm	D mm	OAL mm	Wt. kg.
24	MOTOJ24	25	52	430	1.200
27	MOTOJ27	25	52	430	1.200
30	MOTOJ30	25	52	430	1.200
32	MOTOJ32	25	52	430	1.200
34	MOTOJ34	30	68	530	1.400
36	MOTOJ36	30	68	530	1.400
38	MOTOJ38	30	68	530	1.400
41	MOTOJ41	30	68	530	1.400
46	MOTOJ46	38	82	650	2.700
50	MOTOJ50	38	82	650	2.700
55	MOTOJ55	38	82	650	2.700
60	MOTOJ60	41	94	710	2.950

## FRACTIONAL SIZES

A / F inch	MODEL NO.	T inch	D inch	OAL inch	Wt. lbs.
15/16	AOTOJ15	0.984	2.047	16.929	2.640
1.1/16	AOTOJ17	0.984	2.047	16.929	2.640
1.1/8	AOTOJ18	0.984	2.047	16.929	2.640
1.1/4	AOTOJ20	0.984	2.047	16.929	2.640
1.5/16	AOTOJ21	0.984	2.047	20.870	2.640
1.3/8	AOTOJ22	1.102	2.670	16.929	3.080
1.7/16	AOTOJ23	1.102	2.670	20.866	3.080
1.1/2	AOTOJ24	1.102	2.670	20.866	3.080
1.5/8	AOTOJ26	1.102	2.670	25.590	3.080
1.11/16	AOTOJ27	1.490	3.228	25.590	5.940
1.13/16	AOTOJ29	1.490	3.228	25.590	5.940
1.7/8	AOTOJ30	1.490	3.228	22.834	5.940
2	AOTOJ32	1.490	3.228	24.606	5.940
2.1/16	AOTOJ33	1.490	3.228	24.606	5.940
2.3/16	AOTOJ35	1.490	3.228	25.984	5.940
2.1/4	AOTOJ36	1.490	3.228	25.984	5.940
2.3/8	AOTOJ38	1.614	3.700	27.952	6.380
2.7/16	AOTOJ39	1.614	3.700	27.952	6.380



# STRUCTURAL WRENCHES

(FLAT RING TYPE)



## METRIC BIHEXAGON



A / F mm	MODEL NO.	T mm	D mm	OAL mm	Wt. kg.
24	MTW24	17	47	375	0.760
27	MTW27	17	47	375	0.760
30	MTW30	18	54	375	0.920
32	MTW32	18	54	430	0.920
34	MTW34	18	54	430	0.950
36	MTW36	20	60	530	0.950
38	MTW38	22	66	530	1.650
41	MTW41	22	66	530	1.850
46	MTW46	25	75	580	1.850
50	MTW50	25	80	625	2.250
55	MTW55	26	88	660	2.250
60	MTW60	28	94	710	2.250

## FRACTIONAL BIHEXAGON



A / F inch	MODEL NO.	T inch	D inch	OAL inch	Wt. lbs.
15/16	ATW15	0.669	1.850	14.763	1.670
1.1/16	ATW17	0.669	1.850	14.763	1.670
1.1/8	ATW18	0.708	2.125	14.763	2.000
1.1/4	ATW20	0.708	2.125	16.929	2.000
1.5/16	ATW21	0.708	2.125	16.929	2.150
1.3/8	ATW22	0.708	2.125	16.929	2.150
1.7/16	ATW23	0.787	2.362	20.866	3.520
1.1/2	ATW24	0.866	2.598	20.866	4.100
1.5/8	ATW26	0.866	2.598	20.866	4.100
1.11/16	ATW27	0.984	2.952	20.866	4.950
1.13/16	ATW29	0.984	2.952	22.834	4.950
1.7/8	ATW30	0.984	2.952	22.834	4.950
2	ATW32	0.984	3.149	24.606	5.610
2.1/16	ATW33	0.984	3.149	24.606	5.610
2.3/16	ATW35	1.023	3.464	25.984	6.000
2.1/4	ATW36	1.023	3.464	25.984	6.000
2.3/8	ATW38	1.102	3.700	27.952	6.270
2.7/16	ATW39	1.102	3.700	27.952	6.270

# STRUCTURAL WRENCHES

(FLAT OPEN JAW TYPE)



## METRIC SIZES

A / F mm	MODEL NO.	T mm	D mm	OAL mm	Wt. kg.
24	MTOJ24	17	58	375	0.760
27	MTOJ27	17	58	375	0.760
30	MTOJ30	18	66	375	0.920
32	MTOJ32	18	66	430	0.920
34	MTOJ34	18	73	430	0.950
36	MTOJ36	20	78	530	0.950
38	MTOJ38	20	90	530	1.650
41	MTOJ41	20	90	530	1.850
46	MTOJ46	22	100	580	1.850
50	MTOJ50	22	110	625	2.250
55	MTOJ55	25	120	660	2.250
60	MTOJ60	25	130	710	2.250

## FRACTIONAL SIZES

A / F inch	MODEL NO.	T inch	D inch	OAL inch	Wt. lbs.
15/16	ATOJ15	0.669	2.283	14.763	1.670
1.1/16	ATOJ17	0.669	2.283	14.763	1.670
1.1/8	ATOJ18	0.708	2.598	14.763	2.000
1.1/4	ATOJ20	0.708	2.874	16.929	2.000
1.5/16	ATOJ21	0.708	2.874	16.929	2.150
1.3/8	ATOJ22	0.708	2.874	16.929	2.150
1.7/16	ATOJ23	0.787	3.070	20.866	3.520
1.1/2	ATOJ24	0.787	3.543	20.866	4.100
1.5/8	ATOJ26	0.787	3.543	20.866	4.100
1.11/16	ATOJ27	0.787	3.543	20.866	4.950
1.13/16	ATOJ29	0.866	3.937	22.834	4.950
1.7/8	ATOJ30	0.866	4.330	22.834	4.950
2	ATOJ32	0.866	4.330	24.606	5.610
2.1/16	ATOJ33	0.984	4.724	24.606	5.610
2.3/16	ATOJ35	0.984	4.724	25.984	6.000
2.1/4	ATOJ36	0.984	5.118	25.984	6.000
2.3/8	ATOJ38	0.984	5.118	27.952	6.270
2.7/16	ATOJ39	1.181	5.590	27.952	6.270

